

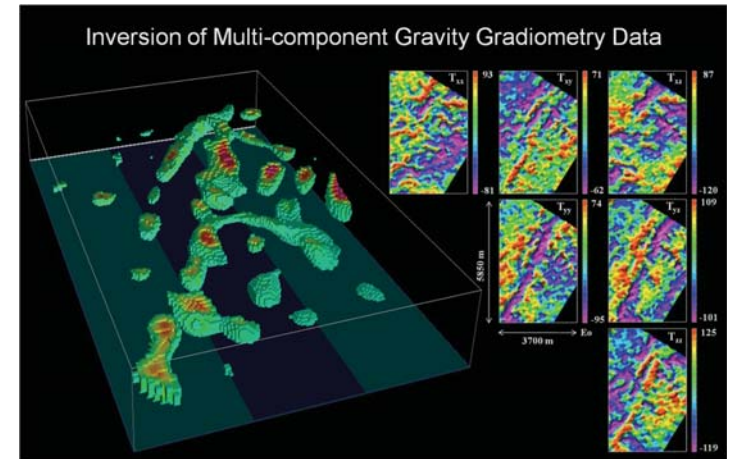
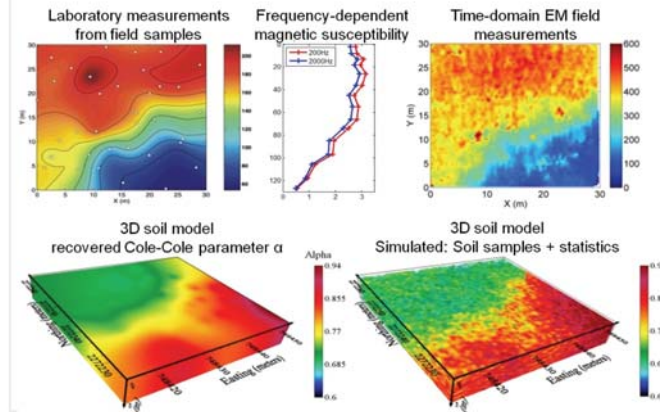


Yaoguo Li

Research Interests

- inverse theory
- inversion of grav, mag, & EM data
- applications to resource exploration, environmental & geotechnical problems

Modeling Magnetic Soil Distribution for UXO Application



Davis, Li, Y., and Oldenburg, D., 2010, Rapid construction of equivalent sources using wavelets, *Geophysics*, 75, L51-L59.

Li, Y., Shearer, S., Haney, M., Dannemiller, N., 2010, Comprehensive approaches to 3D inversion of magnetic data affected by remanent magnetization, *Geophysics*, 75, L1-L11

Davis, K., Li., Y., Nabighian, M., 2010, Automatic detection of UXO magnetic anomalies using extended Euler deconvolution, *Geophysics*, *Geophysics*, 75, G13-G20